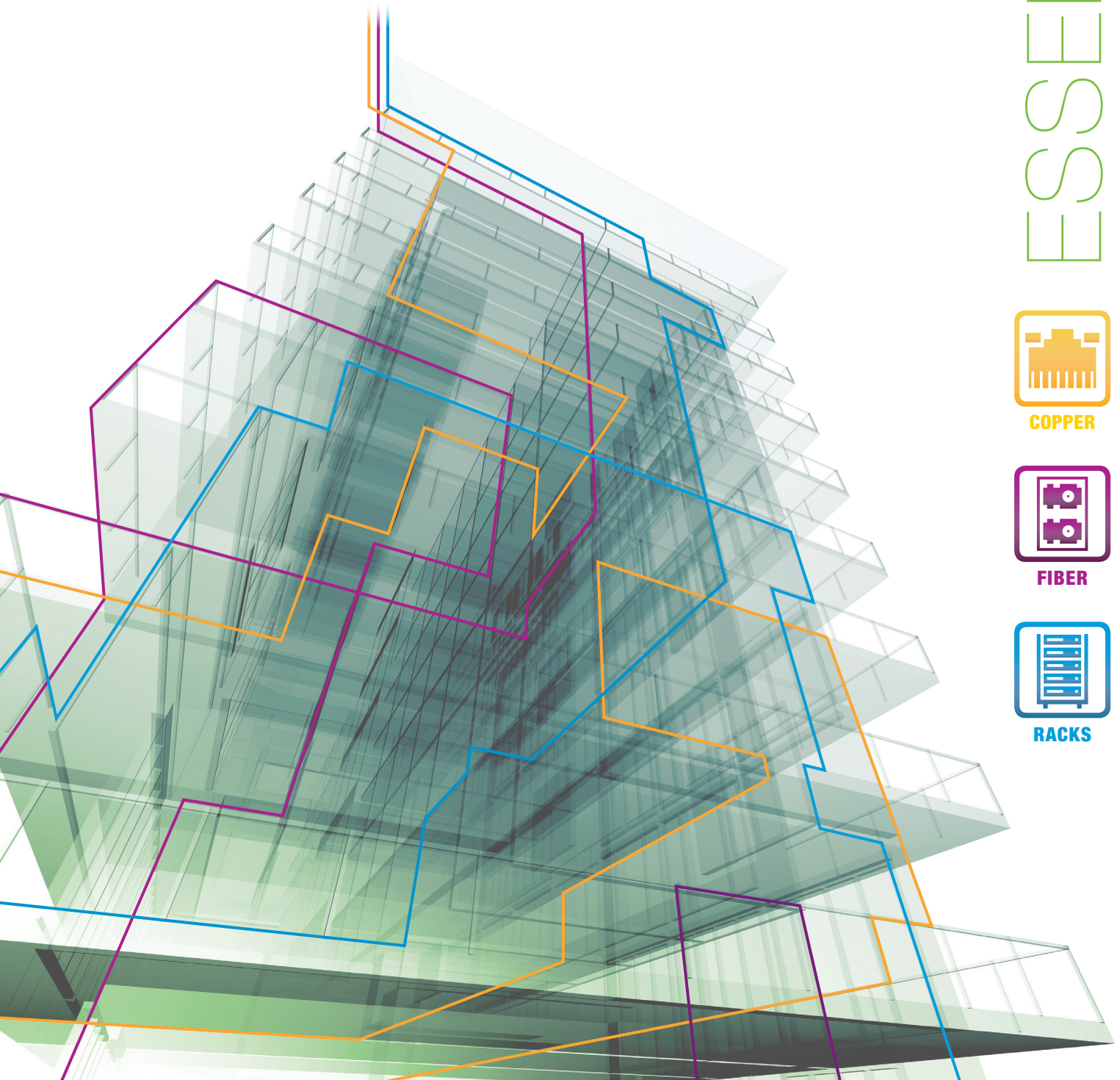


MMC

MultimediaConnect

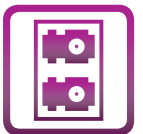
Smart and simple cabling solutions



ESSENTIALS



COPPER



FIBER



RACKS



member of the TKH Group <



member of the TKH Group <

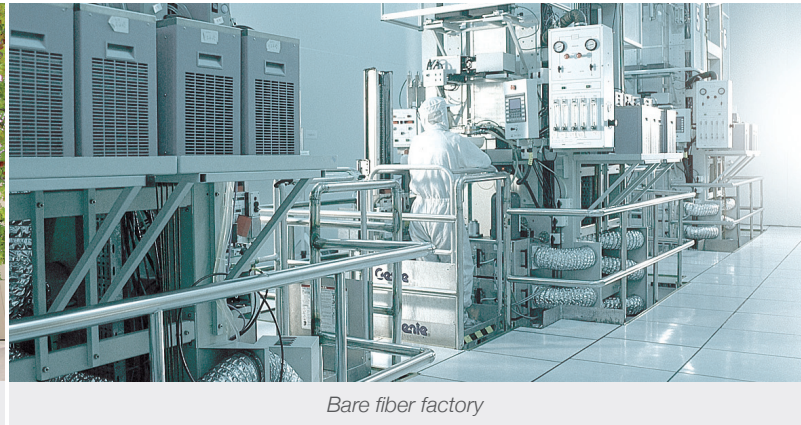
INNOVATION BACKGROUND FOR MANY YEARS

Since 1993, Multimedia Connect has been a structured cabling system manufacturer designing and producing communication solutions for intelligent buildings, that enhances IP convergence.

Quality & innovation are the directions chosen by Multimedia Connect to offer accurate cabling from Enterprise to Datacenter.



Headquarter



Bare fiber factory

Innovation

Since its creation, Multimedia Connect has always been at the forefront of product innovation. We were among the first manufacturers to certify a Category 6 connector (in 2002) and a Category 6a (ISO) connector (in 2010).

«In addition to the performance of our systems, our R&D efforts are focused on designing solutions which facilitate installers and end-users work».

Keep it simple

With Multimedia Connect, technology means simplicity. «We are pioneer in the development of tool less termination and our objective is to invent products and systems which are easy to install and easy to manage».

The opportunities of IP convergence

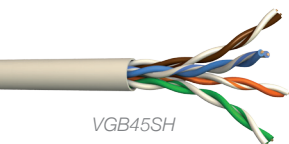
The development of IP (Internet Protocol) in applications such as CCTV, Access Control, Public Address, Video, Audio ... means that structured cabling systems are now used in a large variety of new environments.

At Multimedia Connect, we have identified this fundamental trend of our industry and we are developing specific products and systems which facilitate the convergence between cabling infrastructures and these new IP applications.



COPPER CABLE

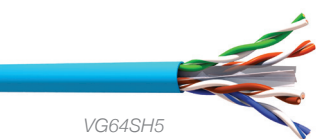
Category 5E cable



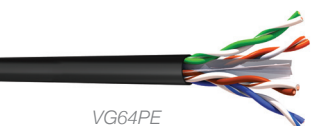
VGB45SH

DESCRIPTION	DRUM 500 M		DRUM 1000 M		BOX 305 M	CPR LEVEL
	4P	2 x 4P	4P	2 x 4P		
CAT5E U/UTP cable LSZH	VGB45SH	VGB85SH	VGB410SH	-	VGB4SHB	Dca
CAT5E U/UTP cable PVC	VGB45	VGB85	-	-	VGB4B	Eca
CAT5E F/UTP cable LSZH	SGB45SH	SGB85SH	SGB410SH	-	SGB4SHB	Dca

Category 6 cable



VG64SH5

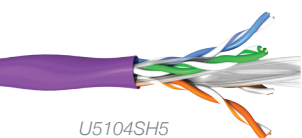


VG64PE

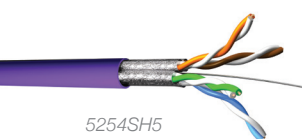
DESCRIPTION	DRUM 500 M		DRUM 1000 M		BOX 305 M	CPR LEVEL
	4P	2 x 4P	4P	2 x 4P		
CAT6 U/UTP cable 250 MHz LSZH	VG64SH5*	VG68SH5	VG64SH*	-	VG64SHB	Dca / Cca
CAT6 U/UTP cable 250 MHz PVC	VG645	-	VG6410	-	VG64B	Eca
CAT6 U/UTP cable 250 MHz PE	VG64PE5	-	VG64PE	-	-	Fca
CAT6 F/UTP cable 350 MHz LSZH	CX64SH5	CX68SH5	CX64SH10	-	CX64SHB	Dca
CAT6 F/UTP cable 350 MHz PE	-	-	CX64PE	-	-	Fca

* For a Cca level, add C letter at the end of the P/N

Category 6A & 7 cable



U5104SH5

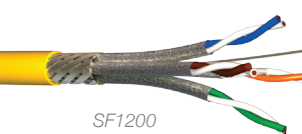


5254SH5

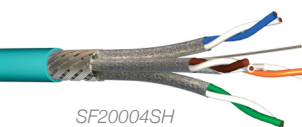
DESCRIPTION	DRUM 500 M		DRUM 1000 M		CPR LEVEL
	4P	2 x 4P	4P	2 x 4P	
CAT6A U/UTP cable 510 MHz LSZH	U5104SH5	-	-	-	Dca
CAT6A F/UTP cable 510 MHz LSZH	FU5104SH5	FU5108SH5	FU5104SH10	-	Dca
CAT6A U/FTP cable 525 MHz LSZH	5254SH5*	5258SH5	5254SH10*	-	Dca / Cca
CAT6A U/FTP cable 525 MHz LSZH INT/EXT	-	-	5254SHINOUT	-	Dca
CAT6A F/FTP cable 555 MHz LSZH	F5554SH5*	F5558SH5	F5554SH10*	-	Dca / Cca
CAT6A S/FTP cable 500 MHz LSZH white	SF5004SHW*	-	-	-	Dca / Cca
CAT7 S/FTP cable 600 MHz LSZH	60045SHEV*	60085SHEV	-	-	Dca / Cca

* For a Cca level, add C letter at the end of the P/N

Category 7A & 8 cable



SF1200



SF20004SH

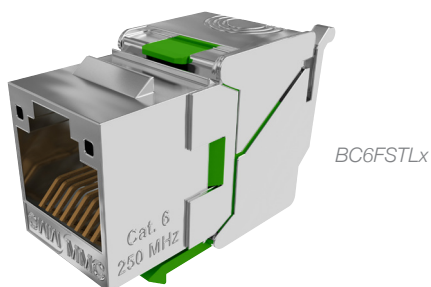
DESCRIPTION	DRUM 500 M		DRUM 1000 M	CPR LEVEL
	4P	2 x 4P		
CAT7A S/FTP cable 1000 MHz LSZH AWG23	SF10004SH5*	SF10008SH5	-	Dca / Cca
CAT7A S/FTP cable 1200 MHz LSZH AWG22	SF12004SH5*	SF12008SH5	-	Dca / Cca
CAT7A S/FTP cable 1200 MHz LSZH AWG22	SF12004SHINOUT	-	-	Dca
CAT8 S/FTP cable 2000 MHz LSZH AWG23	SF20004SHC*	-	-	Cca

* For a Cca level, add C letter at the end of the P/N

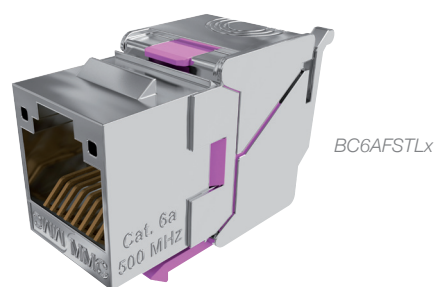
COPPER CONNECTIVITY

BCTL range

BCTL modular jack CAT5E, CAT6 & CAT6A



BC6FSTLx



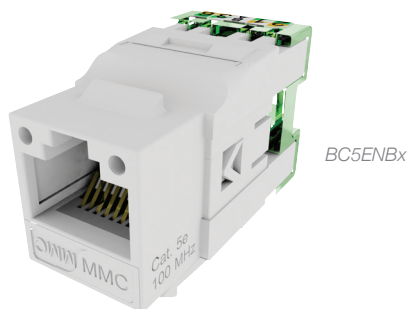
BC6AFSTLx

ITEMS	DESCRIPTION
BC6AFSTLxx*	Tooless CAT6A full shielded RJ45 modular jack
BC6ANBTLxx	Tooless CAT6A unshielded RJ45 modular jack
BC6FSTLxx*	Tooless CAT6 full shielded RJ45 modular jack
BC5EFSTLxx*	Tooless CAT5E full shielded RJ45 modular jack

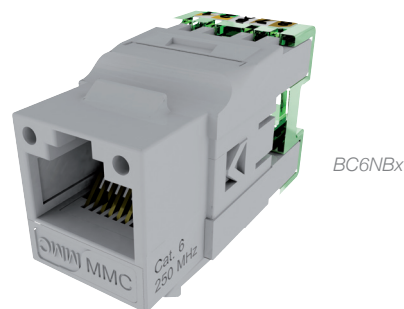
* Replace xx by 8 or 50 for packaging of 8 or 50

BC range

BC modular jack unshielded CAT5E & CAT6



BC5ENBx



BC6NBx

ITEMS	DESCRIPTION
BC5ENBx	CAT5E unshielded RJ45 modular jack
BC6NBx	CAT6 unshielded RJ45 modular jack

Related product



BCTOOLS for BC connector

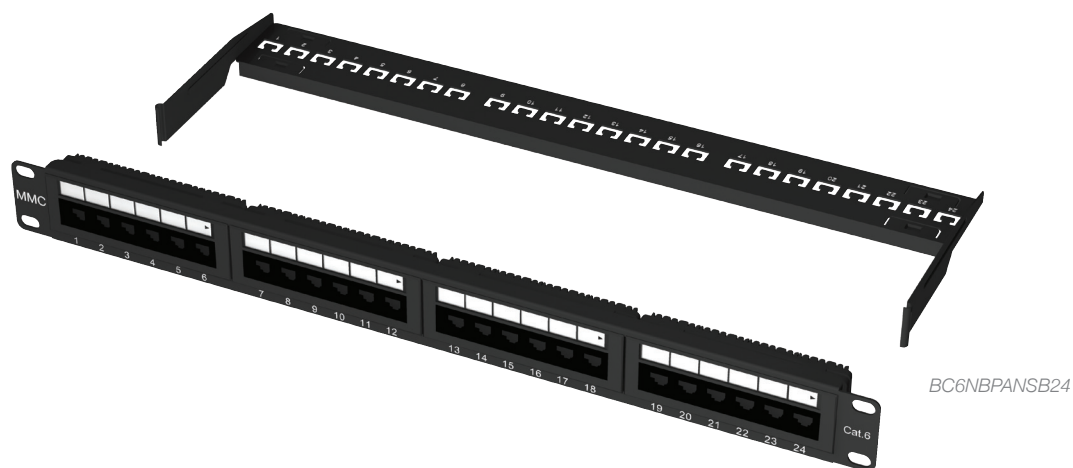


BCDUSTSHB

ITEMS	DESCRIPTION
BCDUSTSHxx	Dust shutter for MMC connectivity
BCTOOLS*	Tool for BC connector

* Tools for BC5ENB and BC6NB

Category 5E & Category 6 19" patch panel



ITEMS	DESCRIPTION
BC5ENBPANSB24	Loaded CAT5E unshielded 19" patch panel 24 ports 1U
BC5ENBPANSB48	Loaded CAT5E unshielded 19" patch panel 48 ports 2U
BC6NBPANSB24	Loaded CAT6 unshielded 19" patch panel 24 ports 1U
BC6NBPANSB48	Loaded CAT6 unshielded 19" patch panel 48 ports 2U

19" patch panel



ITEMS	DESCRIPTION
BCPAN1U	19" patch panel 24 ports 1U - BC serie
BCPAN1UV48P	19" angled patch panel 48 ports on 1U (to be equipped with BCxxFSTL connectivity only)

Faceplate & wall mounted box



BC701C



BC861C

ITEMS	DESCRIPTION
BC451C8	Faceplate 45x45 for 1 connector - BC serie
BC452C8	Faceplate 45x45 for 2 connectors - BC serie
BC861C	Faceplate 86x86 for 1 connector - BC serie
BC862C	Faceplate 86x86 for 2 connectors - BC serie
BC864C	Faceplate 86x86 for 4 connectors - BC serie
BC701C	Faceplate US style for 1 connector - BC serie
BC702C	Faceplate US style for 2 connectors - BC serie
BC704C	Faceplate US style for 4 connectors - BC serie
WP8686R9003	Surface mounting box 86x86 depth 35mm - BC serie
WP8686PR9003	Surface mounting box 86 x 86 depth 45 mm

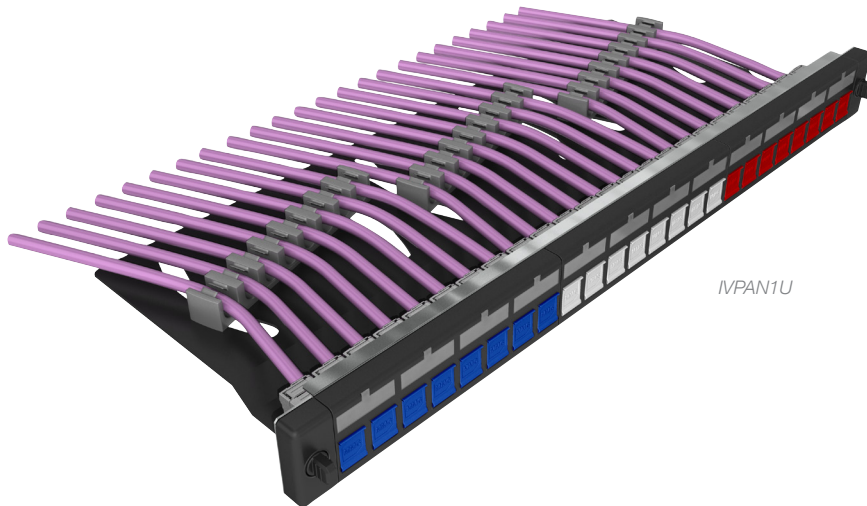
COPPER CONNECTIVITY

Category 6A IV connector



ITEM	DESCRIPTION
IV6AFS	100% toolless CAT6A full shielded RJ45 modular jack

19" patch panel IV

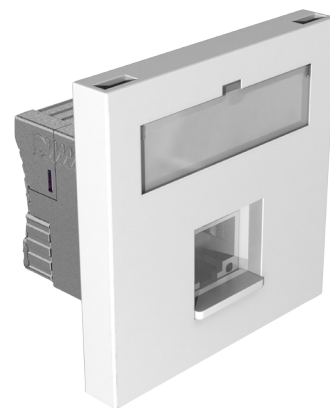


ITEMS	DESCRIPTION
IVPAN1U	19" patch panel 24 ports 1U - IV serie
IVDUSTPANx8	Colored dust shutter for IV panel

Faceplate IV



IVLOCK45xC



IVOB45xC

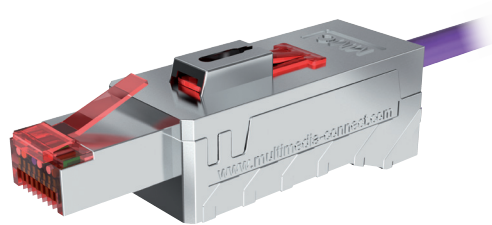
ITEMS	DESCRIPTION
IVLOCK451C	Locking faceplate 45x45 for 1 connector - IV serie
IVOB451C	Antibacterial faceplate 45x45 for 1 connector - IV serie

Angled category 6A RJ45 plug



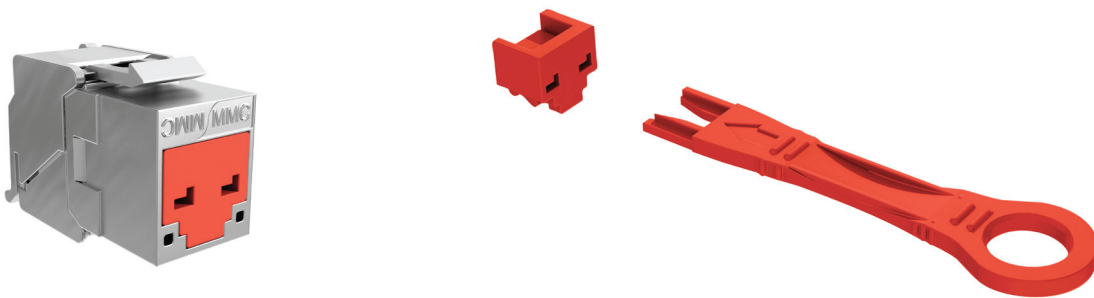
ITEMS	DESCRIPTION
PLAG6AFS	Toolless angled CAT6A shielded RJ45 plug for solid core cable
PLAG6ANB	Toolless angled CAT6A unshielded RJ45 plug for solid core cable

Category 6A toolless locking RJ45 plug



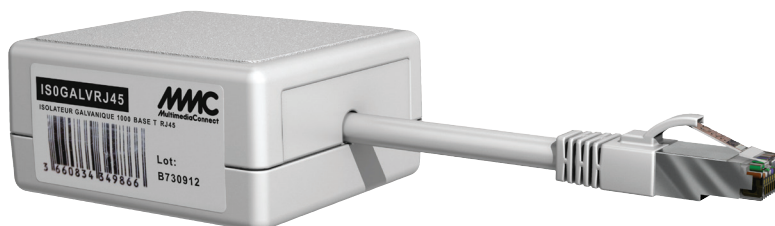
ITEMS	DESCRIPTION
PL6AFS	CAT6A 360° toolless shielded RJ45 plug for solid core cable with locking system
PL6AFSKEY	Key for locking system of PL6AFS

RJ45 locking system



ITEM	DESCRIPTION
LOCKRJ45R	Locking system for RJ45 port

Galvanic isolator



ITEM	DESCRIPTION
ISOGALVRJ45	Galvanic isolator for gigabit network

COPPER CONNECTIVITY

Category 6A RJ45 patchcord - component level



ITEMS	DESCRIPTION
CORD6ASxxMSH*	CAT6A U/FTP MMC RJ45 LSZH patchcord
CORD6ASFxxMSH	CAT6A S/FTP RJ45 LSZH patchcord
CORD6AUxMSH	CAT6A U/UTP MMC RJ45 LSZH patchcord

* Replace x by 0.5/1/2/3 or 5 for different length

Category 6A RJ45 LED patchcord



ITEMS	DESCRIPTION
CORD6ASxxLED	CAT6A S/FTP RJ45 LSZH LED patchcord
LEDTOOL	Injector for LED patchcord

Category 5E & Category 6 RJ45 patchcord



ITEMS	DESCRIPTION
VG504xMSH	CAT6 10G U/UTP MMC RJ45 patchcord - component compliant
CORD6FxxM*	CAT6 F/UTP RJ45 patchcord
CORD6UxxM*	CAT6 U/UTP RJ45 patchcord
CORD5EFxxM*	CAT5E F/UTP RJ45 patchcord
CORD5EUxxM*	CAT5E U/UTP RJ45 patchcord

* Replace x by 0.5/1/2/3 or 5 for different length

FIBER OPTIC CABLES

Indoor/outdoor tight buffered LSZH MULTI IE range	12
Indoor/outdoor central loose tube LSZH INTEX range	12
Indoor central loose tube fiberglass yarn protection HDPE EXTCT range	12
Outdoor central loose tube steel tape armoured HDPE EXTALCT range	12

FIBER OPTIC CONNECTIVITY

Fan out kits for loose tube fiber cables	13
Optical Connectors	13
Optical adapters	14
IP20 ABS wallboxes	14
IP65 ABS wallboxes	14
Telescopic panel	15
Chassis for modular fiber panel	15
19" unloaded removable front plates	15
Pigtails	15
Splice trays	15
Ready to splice transformer modular fiber panels	16
Scindex-duplex optical patchcords	16

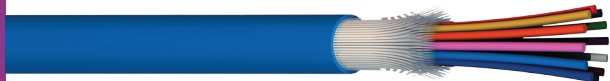
FIBER OPTIC PRETERMINATED LINKS

Classical range for LAN building networks	17
Compact range for data center networks	17
MTP range for SAN high density networks	17

FIBER OPTIC CABLES

All fiber cables are delivered on 2000 m reels or cut on demand (*minimum length for a cut = 100 m*)
For any other fiber count please contact your local distributor.

Indoor/outdoor tight buffered LSZH - MULTI IE



DESCRIPTION	OM2	OM3	OM4	OS2	CPR LEVEL
6 fibres, tight buffered - in/out LSZH	MULTI6IE50	MULTI6IE50OM3	MULTI6IE50OM4	MULTI6IE9125	Dca
12 fibres, tight buffered- in/out LSZH	MULTI12IE50	MULTI12IE50OM3	MULTI12IE50OM4	MULTI12IE9125	Dca
24 fibres, tight buffered - in/out LSZH	MULTI24IE50	MULTI24IE50OM3	MULTI24IE50OM4	MULTI24IE9125	Dca

Indoor/outdoor central loose tube LSZH - INTEX



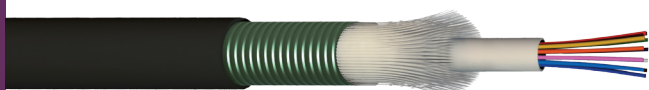
DESCRIPTION	OM2	OM3	OM4	OS2	CPR LEVEL
6 fibres, loose tube - in/out LSZH	INTEX650	INTEX650OM3	INTEX650OM4	INTEX69125	Eca
12 fibres, loose tube - in/out LSZH	INTEX1250	INTEX1250OM3	INTEX1250OM4	INTEX129125	Eca
24 fibres, loose tube - in/out LSZH	INTEX2450	INTEX2450OM3	INTEX2450OM4	INTEX249125	Eca

Outdoor central loose tube fiberglass yarn protection HDPE - EXTCT



DESCRIPTION	OM2	OM3	OM4	OS2	CPR LEVEL
6 fibres, loose tube - Ext fiberglass yarns PEHD	EXTCT650	EXTCT650OM3	EXTCT650OM4	EXTCT69125	Fca
12 fibres, loose tube - Ext fiberglass yarns PEHD	EXTCT1250	EXTCT1250OM3	EXTCT1250OM4	EXTCT129125	Fca
24 fibres, loose tube - Ext fiberglass yarns PEHD	EXTCT2450	EXTCT2450OM3	EXTCT2450OM4	EXTCT249125	Fca

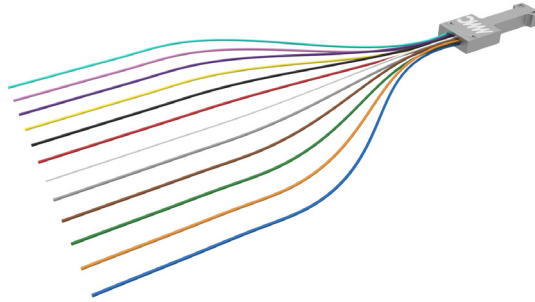
Outdoor central loose tube steel tape armoured HDPE - EXTALCT



DESCRIPTION	OM2	OM3	OM4	OS2	CPR LEVEL
6 fibres, loose tube - Ext steel tape armoured / PEHD	EXTALCT650	EXTALCT650OM3	EXTALCT650OM4	EXTALCT69125	Fca
12 fibres, loose tube - Ext steel tape armoured / PEHD	EXTALCT1250	EXTALCT1250OM3	EXTALCT1250OM4	EXTALCT129125	Fca
24 fibres, loose tube - Ext steel tape armoured / PEHD	EXTALCT2450	EXTALCT2450OM3	EXTALCT2450OM4	EXTALCT249125	Fca

FIBER OPTIC CONNECTIVITY

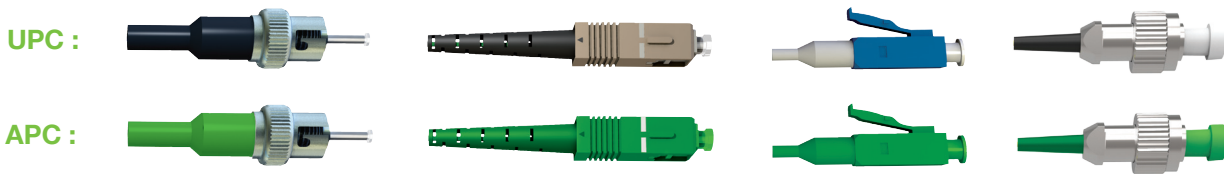
Fan out kits for loose tube fiber cables



ITEMS	DESCRIPTION
48EPO6FO	6 fibres round fan out kit 250 µm with 6 transparent tubes 900 µm
48EP12FO	12 fibres round fan out kit 250 µm with 12 transparent tubes 900 µm
48EP24FO	24 fibres round fan out kit 250 µm with 24 transparent tubes 900 µm
DCFANOUTKIT12C	12 fibres flat fan out kit 250 µm with 24 colored tubes 900 µm

Optical connectors

Packaging of 6 or 100 pcs

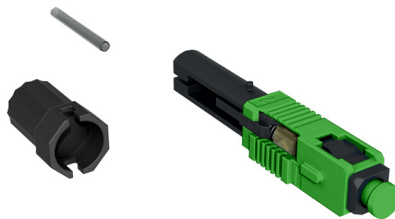


DESCRIPTION	MULTIMODE		SINGLEMODE	
	SIMPLEX	DUPLEX	SIMPLEX	DUPLEX
ST-UPC Connector	48MMCST	-	48SMCST	-
SC-UPC Connector	48MMCSCS	48MMCSCD	48SMCSCS	48SMCSCD
LC-UPC Connector	48MMCLCS	48MMCLCD	48SMCLCS	48SMCLCD
FC-UPC Connector	-	-	48SMCFC	-
ST-APC Connector	-	-	48SMCSTA	-
SC-APC Connector	-	-	48SMCSCAS	48SMCSCAD
LC-APC Connector	-	-	48SMCLCAS	48SMCLCAD
FC-APC Connector	-	-	48SMCFCA	-

Note : For 100 pcs packaging : please write «100» after the regular part number.

SC pre-polished fast field connectors

Packaging of 6 pcs

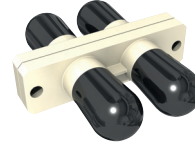


ITEMS	DESCRIPTION
48SMCSCSFLD	UPC OS2 SM SCS fast field connector
48SMCSASFLD	APC OS2 SM SCS fast field connector
48MMCSCSFLDOM3	UPC OM3 MM SCS fast field connector

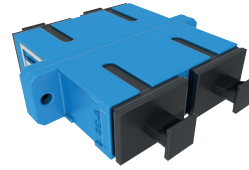
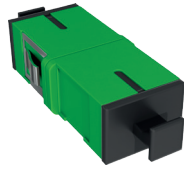
FIBER OPTIC CONNECTIVITY

Optical adapters

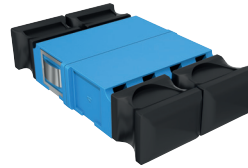
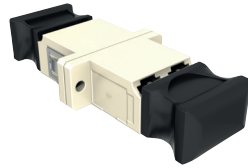
Packaging of 6 pcs



DESCRIPTION	MULTIMODE		SINGLEMODE	
	SIMPLEX	DUPLEX	SIMPLEX	DUPLEX
ST	48MMTSTSBE	48MMTSTDDBE	48SMTSTSB	48SMTSTDB



DESCRIPTION	MULTIMODE				SINGLEMODE			
	SIMPLEX	FLANGELESS	DUPLEX	FLANGELESS	SIMPLEX	FLANGELESS	DUPLEX	FLANGELESS
SC	48MMTSCS	48MMTSCSFL	48MMTSCD	48MMTSCDFL	48SMTSCS	48SMTSCSFL	48SMTSCD	48SMTSCDFL
SC-APC	-	-	-	-	48SMTSCAS	48SMTSCASFL	48SMTSCAD	48SMTSCADFL



DESCRIPTION	MULTIMODE				SINGLEMODE			
	DUPLEX	FLANGELESS	QUAD	FLANGELESS	DUPLEX	FLANGELESS	QUAD	FLANGELESS
LC	48MMTLCD	48MMTLCDFL	48MMTLCQ	48MMTLCQFL	48SMTLCD	48SMTLCDFL	48SMTLCQ	48SMTLCQFL
LC - APC	-	-	-	-	48SMTLCAD	48SMTLCADFL	48SMTLCAQ	48SMTLCAQFL

IP20 ABS wallboxes

Individual packaging



ITEMS	DESCRIPTION
48BMOP3P	6 ports optical surface/wallbox without module
48BMOPSC	Module for 2*SCD or LCQ or STD adapters (unloaded)
48BMOPOB	Dummy module

IP65 ABS wallboxes

Individual packaging



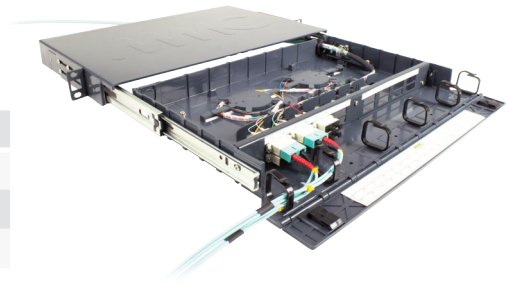
ITEMS	DESCRIPTION
48BMOP24IP65PN	IP65 optical wallbox for 12 fibres ST or SC or 24 fibres LC
48BMOP48IP65PN	IP65 optical wallbox for 24 fibres ST or SC or 48 fibres LC

TTPANEL

Telescopic ABS panel

Telescopic rail, integrated routing, light weight

ITEMS	DESCRIPTION
TT1U24SCSLCD	Telescopic ABS panel 1U for 24 SCS or LCD
TT1U16SCDLQ	Telescopic ABS panel 1U for 24 SCD or LCQ
TT1U24SCDLQ	Telescopic ABS panel 1U for 24 SCD or LCQ



Transformer panel

Chassis for modular fiber panel

Multimedia Connect offers ready to use fiber panel, with :

- Maximum modularity optimale thanks to removable front plates
- Easy ID with label ports integrated to the faceplates
- High density via adapters or MTP® cassettes at front or rear
- Customized service with ready to splice assembled panels
- 25 years warranty on MTP® cassettes & preterminated fiber links



ITEMS	DESCRIPTION
CH1U	Empty sliding chassis for fiber panel, 1U grey

* to be assembled with the front plates below

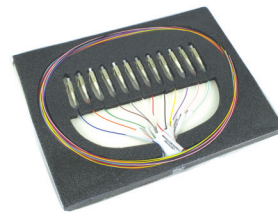
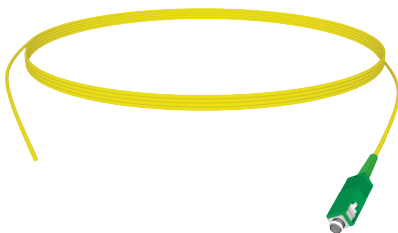
19" unloaded removable front plates

ITEMS	DESCRIPTION
FU1U24SCSLCD	Unloaded front plate for 24 SCS / LCD
FU1U48SCSLCD	Unloaded front plate for 48 SCS / LCD flangeless adapters
FU1U24SCDLQ	Unloaded front plate for 24 SCD / LCQ adapters
FU1U3MOD	Unloaded front plate for 3 LGX modules or MTP® cassettes

* for adapters please see page 14



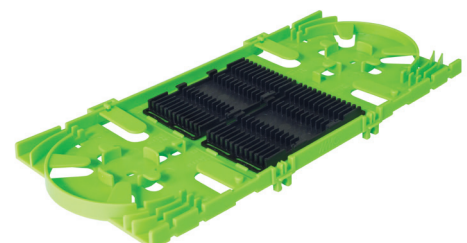
Pigtails



DESCRIPTION	OM3		OM4		OS2	
	INDIVIDUAL PACK	12 COLORS PACK	INDIVIDUAL PACK	12 COLORS PACK	INDIVIDUAL PACK	12 COLORS PACK
ST 2 m pigtails	PIGST2OM3	PIGST2OM3B12	PIGST2OM4	PIGST2OM4B12	PIGST2OS2	PIGST2OS2B12
SC 2 m pigtails	PIGSC2OM3	PIGSC2OM3B12	PIGSC2OM4	PIGSC2OM4B12	PIGSC2OS2	PIGSC2OS2B12
LC 2 m pigtails	PIGLC2OM3	PIGLC2OM3B12	PIGLC2OM4	PIGLC2OM4B12	PIGLC2OS2	PIGLC2OS2B12
SC-APC 2 m pigtails	-	-	-	-	PIGSCAPC2OS2	PIGSCA2OS2B12


Splice tray & heatshinks

ITEMS	DESCRIPTION
48K712F1598	Stackable splice tray for 12 heatshinks or mechanical splice
48K724FO2298	Stackable splice tray for 24 heatshinks or mechanical splice
MANCHONEPISSURE	Heatshrink 40 mm
MANCHONEPISSURE60	Heatshrink 60 mm



Ready to splice Transformer modular fiber panels

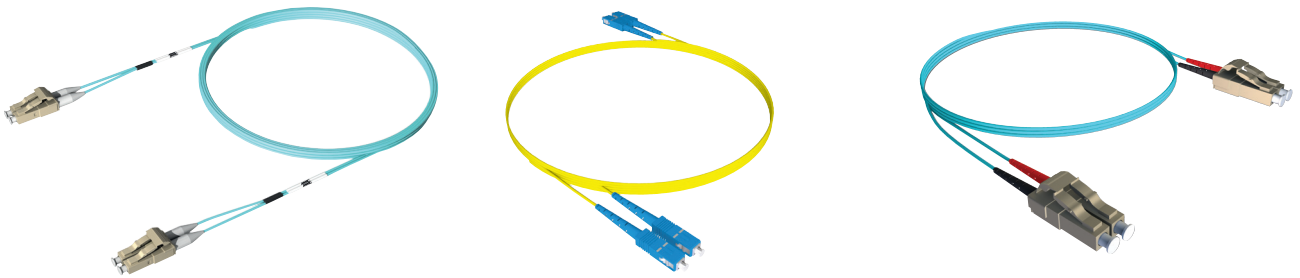
- Up to 2 hours saved for a qualified technician
- Front plate, adapters, pigtails & splice trays delivered assembled
- Pigtails ideally managed and protected into the splice tray
- Pigtails are connected to the adapters according to the color code



ASSEMBLED FIBER PANEL	NUMBER OF PIGTAILS	TYPE OF ADAPTERS	PERFORMANCE	SCREW MOUNTED
TO 1U	XX P	XXXXXXX	XXX	X
	6	STS* STAS	OM1	- (screwless)
	12	STD* STAD	OM2	1 (with 48MMTVIS screws)
	24	SCS SCAS	OM3	
	36	SCD* SCAD	OM4	
	48	SCSISS SCASSIS*	OS2	
	72	LCD LCAD	7A2 (G657 A2)	
	96	LCQ LCAQ		

*Always with screws

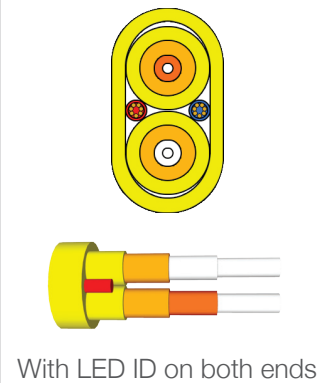
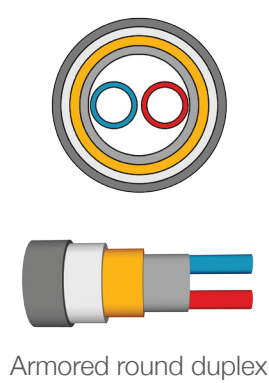
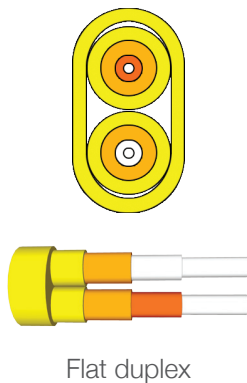
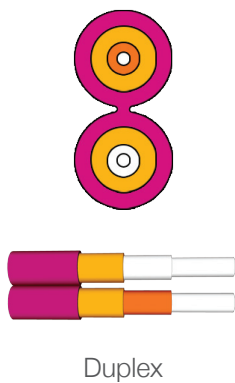
Duplex optical patchcords LSZH



DESCRIPTION	OM1	OM2	OM3	OM4	OS2
ST/ST duplex patchcords LSZH	JSTSTxDMUL	JSTSTxDMUL50	JSTSTxDMUL50OM3	JSTSTxDMUL50OM4	JSTSTxDMONO
SC/ST duplex patchcords LSZH	JSCSTxDMUL	JSCSTxDMUL50	JSCSTxDMUL50OM3	JSCSTxDMUL50OM4	JSCSTxDMONO
SC/SC duplex patchcords LSZH	JSCSCxDMUL	JSCSCxDMUL50	JSCSCxDMUL50OM3	JSCSCxDMUL50OM4	JSCSCxDMONO
LC/ST duplex patchcords LSZH	JLCSTxDMUL	JLCSTxDMUL50	JLCSTxDMUL50OM3	JLCSTxDMUL50OM4	JLCSTxDMONO
LC/SC duplex patchcords LSZH	JLCSCxDMUL	JLCSCxDMUL50	JLCSCxDMUL50OM3	JLCSCxDMUL50OM4	JLCSCxDMONO
LC/LC duplex patchcords LSZH	JLCLCxDMUL	JLCLCxDMUL50	JLCLCxDMUL50OM3	JLCLCxDMUL50OM4	JLCLCxDMONO

* replace x by the length

Other types of patchcords are available on request



FIBER OPTIC PRETERMINATED LINK

MMC proposes a range of factory preterminated optical links covered by the **25 years system warranty**.

Classical range for LAN building networks

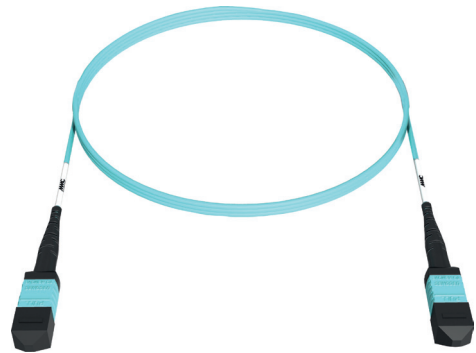
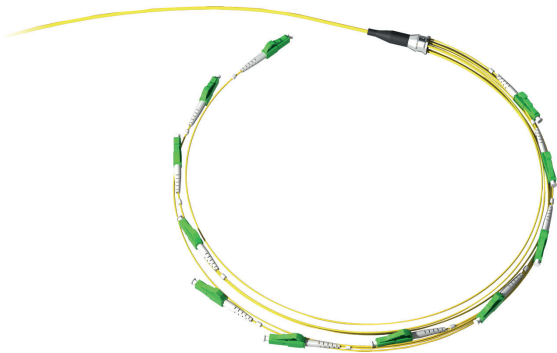


**MMC 25 YEARS
SYSTEM WARRANTY**

EP aa | yyy yyy xxx xxx zzz

ITEMS	DESCRIPTION
Replace aa by the number of fiber strings	4/6/8/12/24 brins
Replace yyy by the length in meters	From 1 to 150 meters
Replace xxx by the connectors right/left	ST SC, FC, LC, with UPC or APC 8°
Replace zzz by the type of fiber	OM1, OM2, OM3, OM4, OS2

Compact range for data center networks



ITEMS	DESCRIPTION
P aa M yyy xxx xxx zzz	Preterminated fiber link micro-break out loose tube indoor LSZH

MTP® range for SAN high density networks

ITEMS	DESCRIPTION
MTP TRUNK xx zzz yyy	MTP® female /MTP® female preterminated fiber link micro-break out single sheath indoor LSZH < 10 m
MTP RUG xx zzz yyy	MTP® female /MTP® female preterminated fiber link micro- break out double sheath indoor LSZH > 10 m
MTP C xx zzz yyy	MTP® female /MTP® female preterminated fiber link micro- break out double sheath corrugated steel indoor LSZH > 10 m
MTP FAN xx zzz yyy aaa	MTP® male / 12*LC or SC preterminated fiber link micro-break out single sheath indoor LSZH < 10 m
MTP FAN C xx zzz yyy	MTP® male / 12*LC or SC preterminated fiber link micro- break out double sheath corrugated steel indoor LSZH > 10 m

19" RACKS

Etential range	19
Technic range	20
Server range	21

19" ACCESSORIES

Fan unit	22
Plinth	22
19" grounding kit	22
Shelves	23
19" panel	23
19" power unit distribution	23

19" WALL MOUNTED CABINET

19" Wall mounted cabinet depth 400mm	24
19" Wall mounted cabinet 3 parts depth 500mm	24
19" Wall mounted cabinet depth 600mm	24
19" Wall mounted frame	24

10" RANGE

10" Wall mounted cabinet	25
10" modular panel	25
10" accessories	25

19" RACKS

Cabinet range

ESSENTIAL



500Kg



27U/42U



600x600 / 600x800
800x600 / 800x800



Flatpack



ITEMS	NUMBER OF U	WIDTH	DEPTH	DESCRIPTION
ES2766	27 U	600	600	19" Essential cabinet 27U 600 x 600
ES4266	42 U	600	600	19" Essential cabinet 42U 600 x 600
ES4268	42 U	600	800	19" Essential cabinet 42U 600 x 800
ES4286	42 U	800	600	19" Essential cabinet 42U 800 x 600
ES4288	42 U	800	800	19" Essential cabinet 42U 800 x 800

Flatpacking

ITEMS	NUMBER OF U	WIDTH	DEPTH	DESCRIPTION
ES2766x	27 U	600	600	19" Essential cabinet flatpack 27U 600 x 600
ES4266	42 U	600	600	19" Essential cabinet flatpack 42U 600 x 600
ES4268	42 U	600	800	19" Essential cabinet flatpack 42U 600 x 800
ES4286	42 U	800	600	19" Essential cabinet flatpack 42U 800 x 600
ES4288	42 U	800	800	19" Essential cabinet flatpack 42U 800 x 800

Accessories

ITEMS	DESCRIPTION
ACJMAR27	19" rear mounting 27U for Essential cabinet
ACJMAR642	19" rear mounting 42U for Essential cabinet depth 600
ACJMAR842	19" rear mounting 42U for Essential cabinet depth 800
ACRINGS6	Pack of 6 rings for vertical cabling management Essential cabinet depth 800

19" RACKS

Cabinet range

TECHNIC



800Kg



27U/33U
42U/47U
(+12U)



600x600 / 600x800
800x600 / 800x800



ITEMS	NUMBER OF U	WIDTH	DEPTH	DESCRIPTION
T2766	27 U	600	600	19" Technic cabinet 27U 600 x 600
T3366	33 U	600	600	19" Technic cabinet 33U 600 x 600
T3388	33 U	800	800	19" Technic cabinet 33U 800 x 800
T4266	42 U	600	600	19" Technic cabinet 42U 600 x 600
T4268	42 U	600	800	19" Technic cabinet 42U 600 x 800
T4286	42 U	800	600	19" Technic cabinet 42U 800 x 600
T4288	42 U	800	800	19" Technic cabinet 42U 800 x 800
T4288SP0	42 U	800	800	19" Technic extension cabinet" 42U 800 x 800
T4288F0R0SP0	42 U	800	800	19" Technic skeleton cabinet 19" 42U 800 x 800
T4288F2PR2P	42 U	800	800	19" Technic cabinet perforated front and rear doors 42U 800 x 800
T42810	42 U	800	1000	19" Technic cabinet 42U 800 x 1000

Cabinet range

SERVER



1000Kg



42U/47U
(+12U)



600x1000 / 800x1000
800x1200



ITEMS	NUMBER OF U	WIDTH	DEPTH	DESCRIPTION
S42610	42 U	600	1000	19" Server cabinet 42U 600 x 1000
S42810	42 U	800	1000	19" Server cabinet 42U 800 x 1000
S42812	42 U	800	1200	19" Server cabinet 42U 800 x 1200
S47810	47 U	800	1000	19" Server cabinet 47U 800 x 1000
S47812	47 U	800	1200	19" Server cabinet 47U 800 x 1200

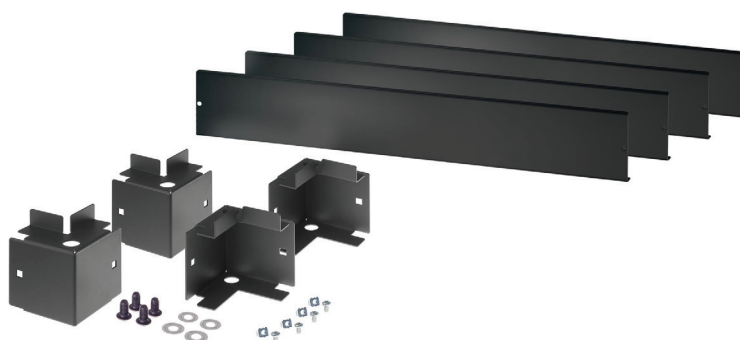
19" ACCESSORIES

Fan unit



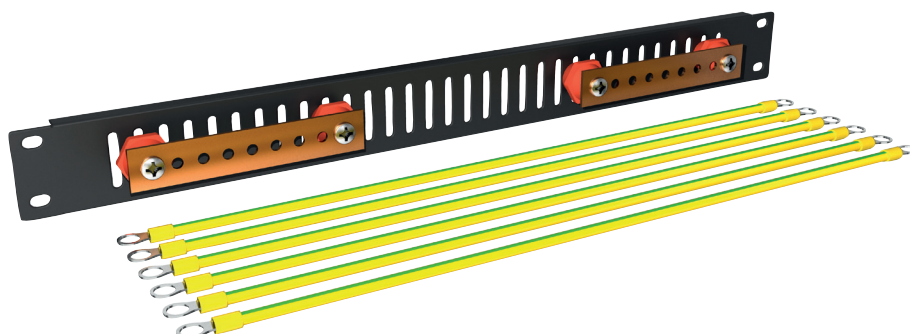
ITEMS	DESCRIPTION
ACB2V	Block 2 fan unit for 19" Multimedia Connect cabinet
ACB4V	Block 4 fan unit for 19" Multimedia Connect cabinet
ACTHERMOST	Thermostat for ACB2V ou ACB4V

Plinth



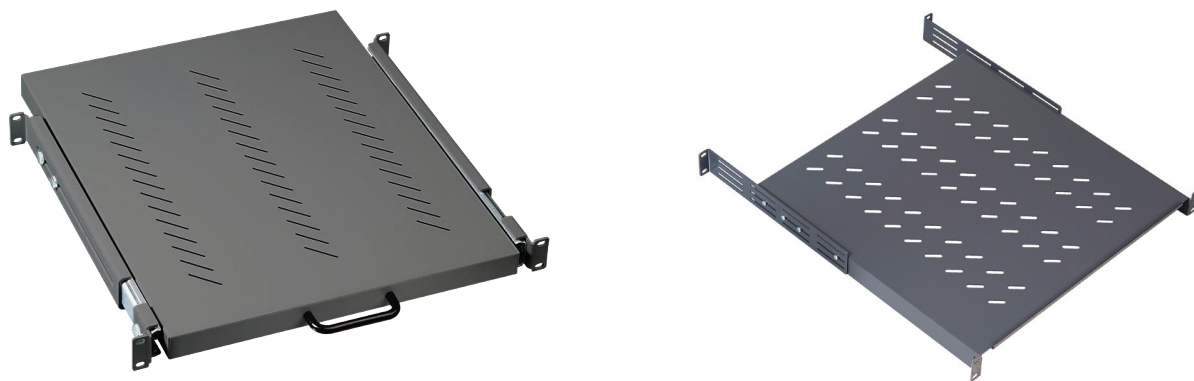
ITEMS	DESCRIPTION
AC66PLINTH100	Plinth height 100mm for cabinet 600 x 600
AC86PLINTH100	Plinth height 100mm for cabinet 800 x 600 ou 600 x 800
AC88PLINTH100	Plinth height 100mm for cabinet 800 x 800
AC810PLINTH100	Plinth height 100 mm for cabinet 800 x 1000

19" grounding kit



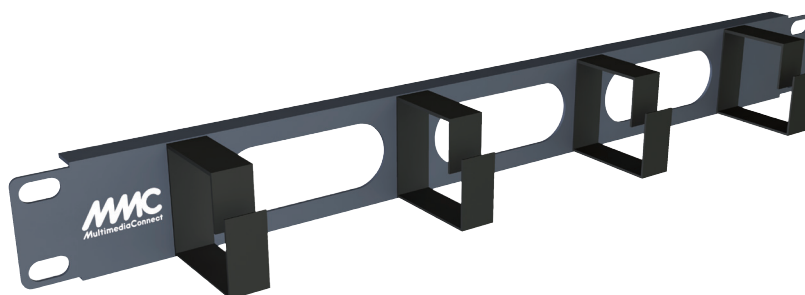
ITEM	DESCRIPTION
BMASSE19	19" grounding system

Shelves



ITEMS	DESCRIPTION
49PM1U250G	19" modem plate depth 250 mm 1U
BPF1U450AD	19" adjustable fixed plate depth 450 mm 1U
BPG1Uxxx	19" sliding plate depth 350 or 550 mm 1U
BSERVPF720G	19" fixed plate depth 720 mm 720 mm 1U
BSERVPG720G	19" sliding plate depth 720 mm 720 mm 1U

19" panel management



ITEMS	DESCRIPTION
MMCPF1U4CROG	19" panel equipped with 4 management rings 1U
MMCPF1UG	19" panel equipped with brush 1U
MMCOBxUG	19" blank panel - 1U ou 2U ou 3U ou 5U

19" power unit distribution



ITEMS	DESCRIPTION
49BP6I	19" power distribution unit 6 sockets plastic case equipped with switch
49BP7	19" power distribution unit 7 sockets plastic case
49BM6DDP	19" power distribution unit 6 sockets aluminium case equipped with protected differential switch
49BM8PM	19" power distribution unit 8 sockets aluminium case
49BM8IPPM	19" power distribution unit 8 sockets aluminium case equipped with protected switch
49BM8IPMSH	19" power distribution unit 8 schuko 20 sockets aluminium with switch

19" WALL MOUNTED CABINET



19" wall mounted cabinet depth 400 mm

ITEMS	DESCRIPTION
49K07P400	19" wall mounted cabinet 7U 400mm depth
49K10P400	19" wall mounted cabinet 10U 400mm depth
49K13P400	19" wall mounted cabinet 13U 400mm depth
49K16P400	19" wall mounted cabinet 16U 400 mm depth

19" wall mounted cabinet 3 parts depth 500 mm

ITEMS	DESCRIPTION
49K07P5003P	19" wall mounted cabinet 3 parts 7U 500mm depth
49K10P5003P	19" wall mounted cabinet 3 parts 10U 500mm depth
49K13P5003P	19" wall mounted cabinet 3 parts 13U 500mm depth
49K16P5003P	19" wall mounted cabinet 3 parts 16U 500mm depth

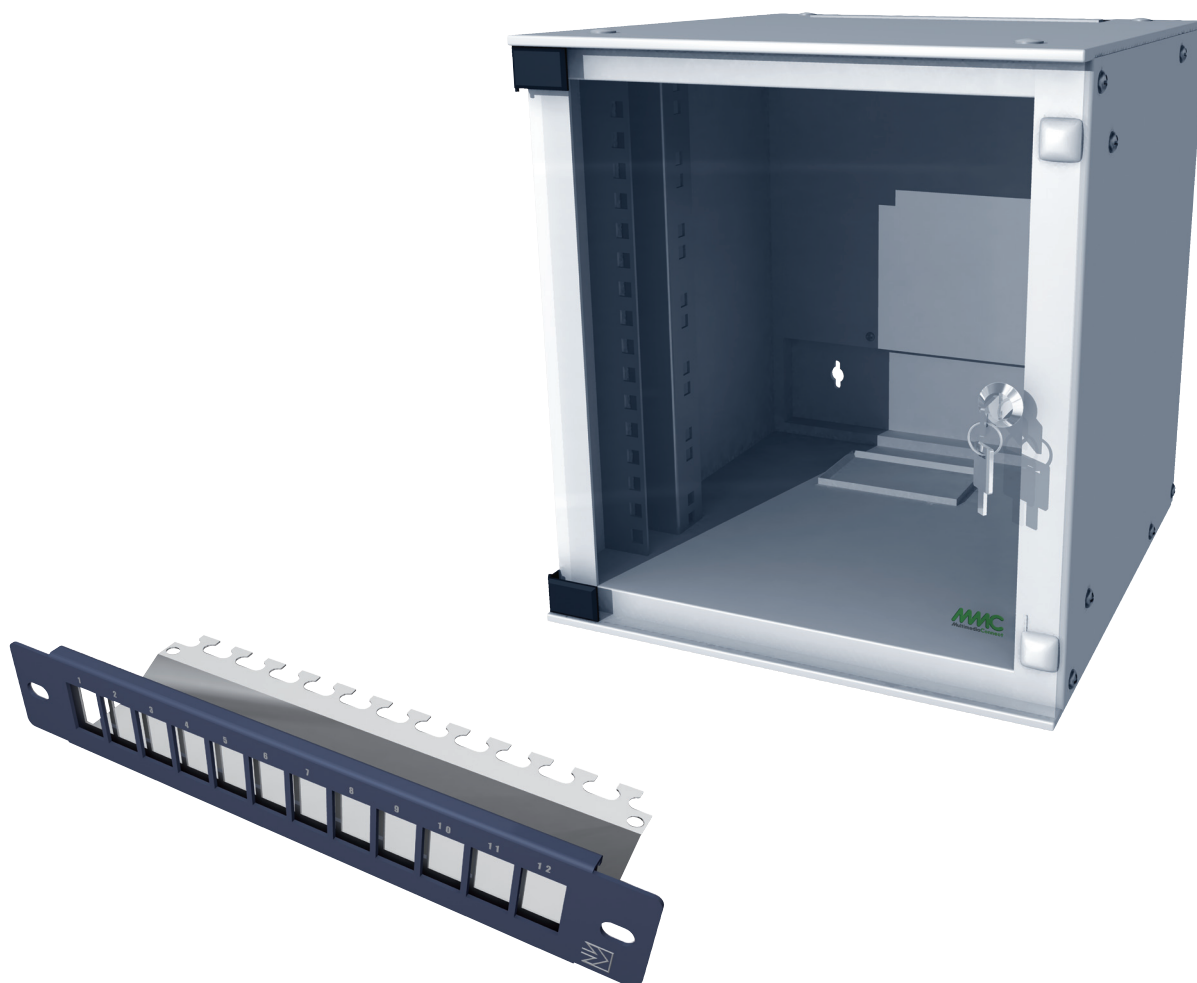
19" wall mounted cabinet depth 600 mm

ITEMS	DESCRIPTION
49K10P600	19" wall mounted cabinet 10U 600mm depth
49K16P600	19" wall mounted cabinet 16U 600mm depth
49K22P600	19" wall mounted cabinet 22U 600mm depth

19" wall mounted frame

ITEMS	DESCRIPTION
49CM7U	19" wall mounted frame 7U
49CM10U	19" wall mounted frame 10U
49CM16U	19" wall mounted frame 16U

10" RANGE



10" wall mounted cabinet

ITEMS	DESCRIPTION
DC10COF6U	10" wall mounted cabinet 6U

10" modular panel

ITEMS	DESCRIPTION
DC10T1U8SC	10" optical module 8 SC duplex 10" 1U
DC10T1U12LC	10" optical module 12 LC duplex 1U

10" accessories

ITEMS	DESCRIPTION
DC10PAN1UK	10" patch panel 12 RJ45 1U
DC10PAN2UK	10" patch panel 24 RJ45 2U
DC10GC1U	10" management patch panel 1U
DC10OB1U	10" blank panel 1U
DC10OB2U	10" blank panel 2U
DC10OB3U	10" blank panel 3U
DC104PC	10" power unit distribution 4 sockets 1U
DC10PM1U	10" modem plate 1U

25 YEARS SYSTEM WARRANTY

High quality, guaranteed !

Multimedia Connect 25 years system warranty reflects the importance we give to the quality, committing ourselves directly towards the end user of our products.

Multimedia Connect 25 years system warranty is offered by Multimedia Connect Certified Installers, which we have been selected and trained. This warranty is the consequence of stringent quality procedures which are applied from the design to the production and logistic levels of our organisation.



Certified by renowned independent laboratories

Since its creation, Multimedia Connect has worked closely with Delta Electronics, an independent Laboratory, based in Denmark.

Delta is, without doubt, an international reference for third party certification in our industry. Our products, systems and manufacturing processes have been tested and certified by Delta since 1999.

We also work with ETL and 3P.

In total, Multimedia Connect holds one of the largest range of third party certificates covering components, permanent links and channels.





www.multimedia-connect.fr



ZAC des hauts de Wissous «Air Park de Paris»
Batiment le Cormoran
3 avenue Jeanne Garnerin 91320 WISSOUS
Tel. +33 (0) 1 69 79 39 80
Email : contact@multimedia-connect.fr



member of the TKH Group <